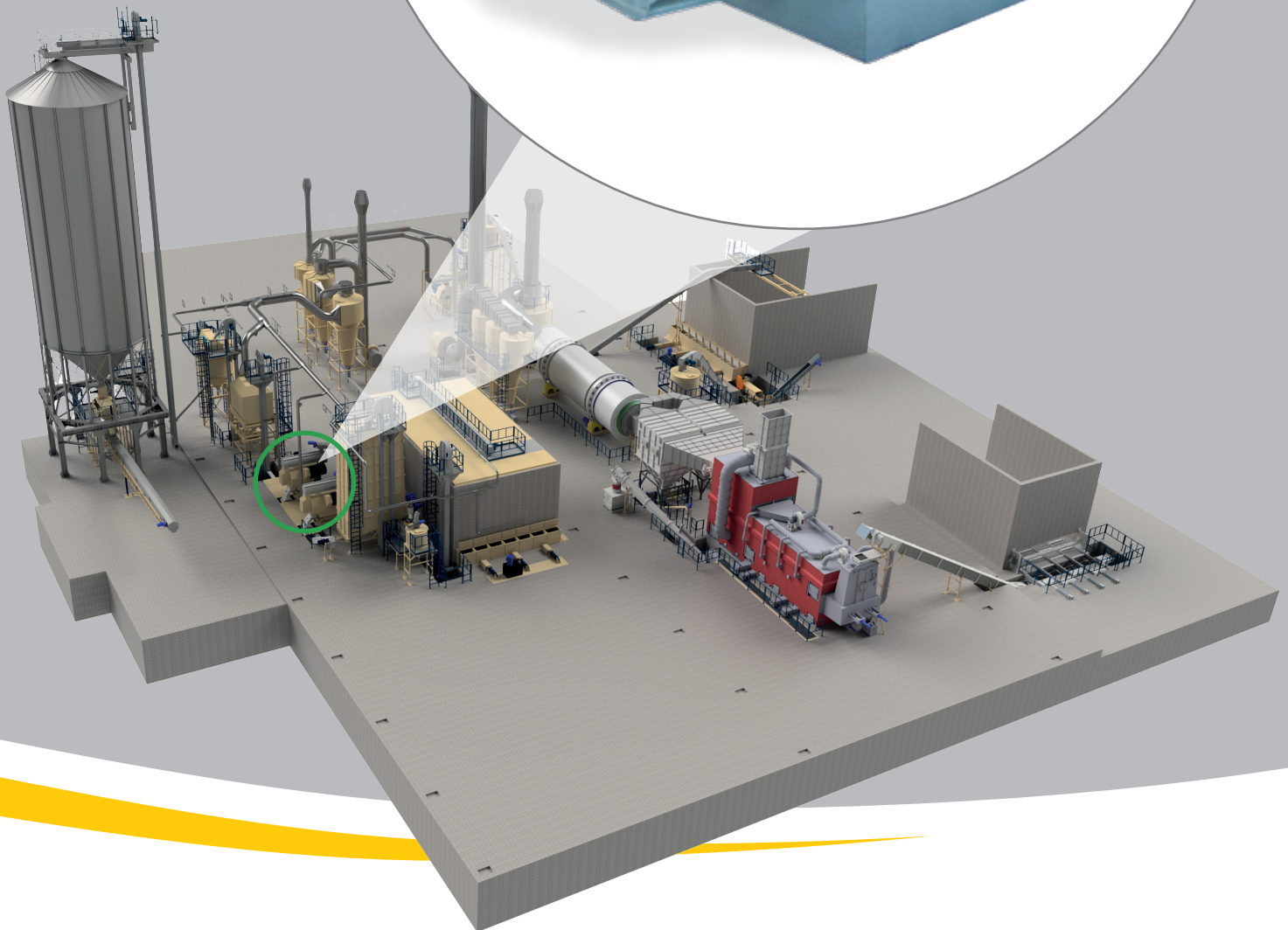
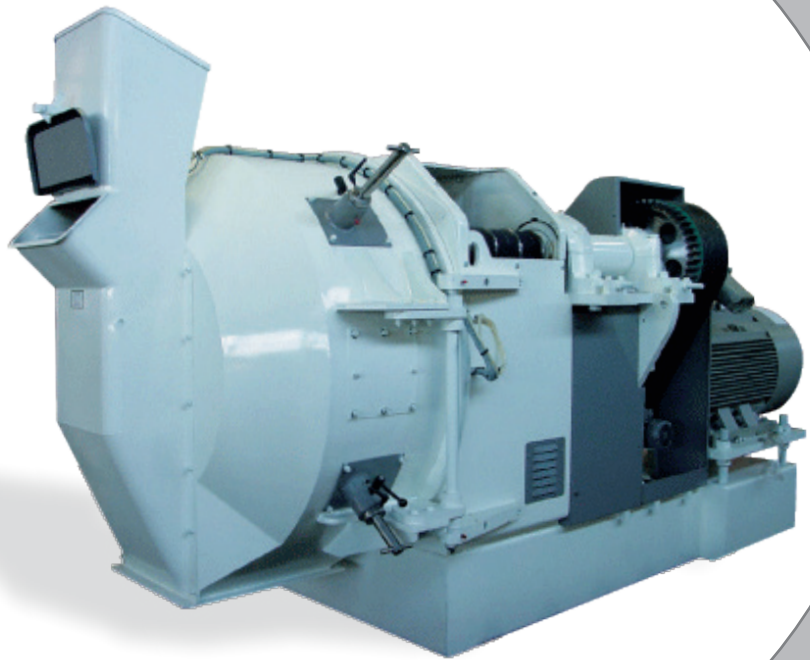


Pellet Mills Promill



COMERC
ACCORDING TO NATURE

Promill
A Moret Industries Company

Pellet Mills Promill

Promill pellet mills are perfectly adjusted to work with various types of wood material, both soft and hard wood. They are characterized by high efficiency and low energy consumption. Depending on the requirements and purpose Promill pellet mills could work with capacity from 3,5 t/h to 6,0 t/h.

Advantages

- inertial main shaft and belt transmission ensure maximum efficiency and reliability of pellet mill operation with simultaneously low energy consumption, low operating costs and extended life of the machine
- thermo-mechanical die changing system helps to quick exchange the die and minimizes vibrations during pellet mill operation, which extends bearings life
- slow die rotation mechanism enables to perform 1 die revolution per minute in both directions, which ensures safe and comfortable operation of the machine
- multi-knives allow to control length of pellets according to chosen quality standards



Basic parameters of pellet mills	
Model/Type	EVOLUTION 8105 ESR
Drive type	electric motor
Drive power	250 - 355 kW
Inner diameter of die	800 mm
Number of rollers	2 pcs.
Capacity	3,5 -6,0 t/h
Progressive greasing system	180 g/h
Greasing pump	1 pc.
Pellet cutting knives	1 set
Roller temperaure control	2 pcs.
Control of temperature in pelletizing chamber	1 pc.
Vibration sensor	1 pc.
Linear speed of die	3,8 m/s
Weight	~12000 kg
Manufacturer	Promill

